



5/83 Bassett Street
MONA VALE NSW 2103
PO Box 707
MONA VALE NSW 1660
Phone: 1800 636 091
Fax: 02 9997 7852
email: info@devexsystems.com.au
www.devexsystems.com.au

Setup Guide

X Thermostat TS500

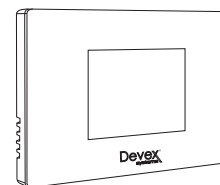
Electronic Timer Thermostat



Table of Contents

Included in the box	1
Installer Guide	2
Technical specifications	2
Dimensions	2
Mounting Instructions.....	3
User Guide	4
TS 500 setup	4
Home screen information	5
Timer setup	6

Included in the box



X Thermostat TS 500



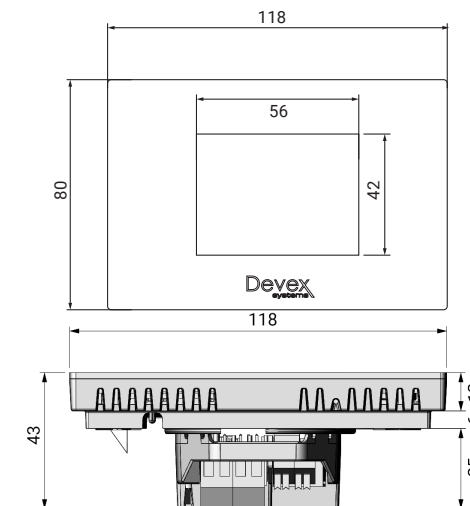
3m 15 kOhms NTC sensor

Installer Guide

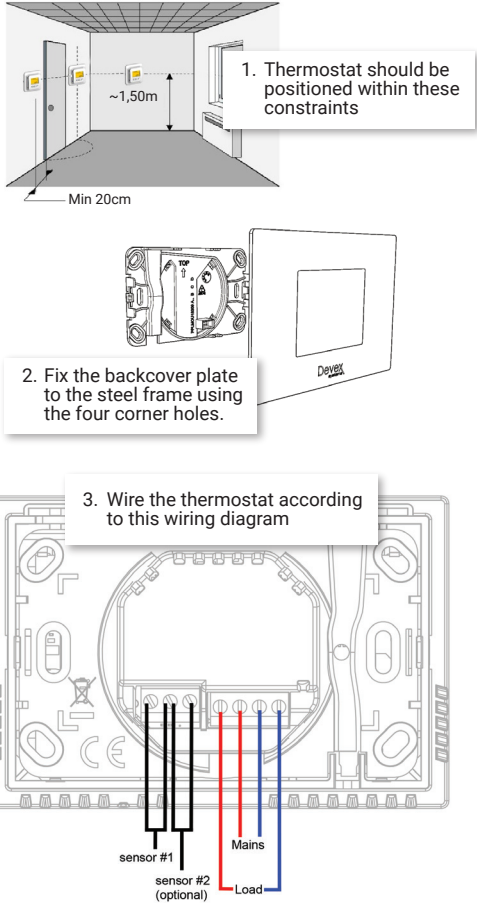
Technical Specifications

Sensing Type	Air / Floor / Air-Floor
Mounting	Surface mounted
Measuring accuracy	0.1°C
Operating temperature	0°C - 50°C
Setting temperature range	5°C - 35°C
Electrical protection	Class II - IP21
Main switch	Two poles 16A
Power supply	230Vac +/- 10% 50Hz
Output	Relay 16A 250Vac resistive load
Type of external sensor	NTC - 15 kOhms at 25°C

Dimensions

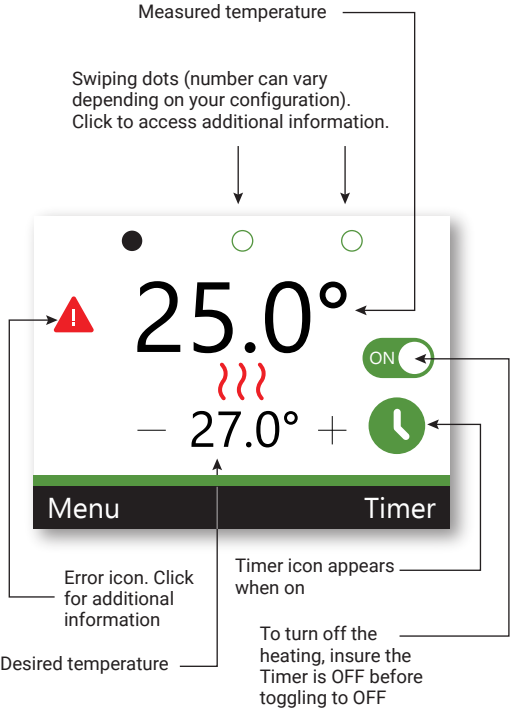


Mounting Instructions



3

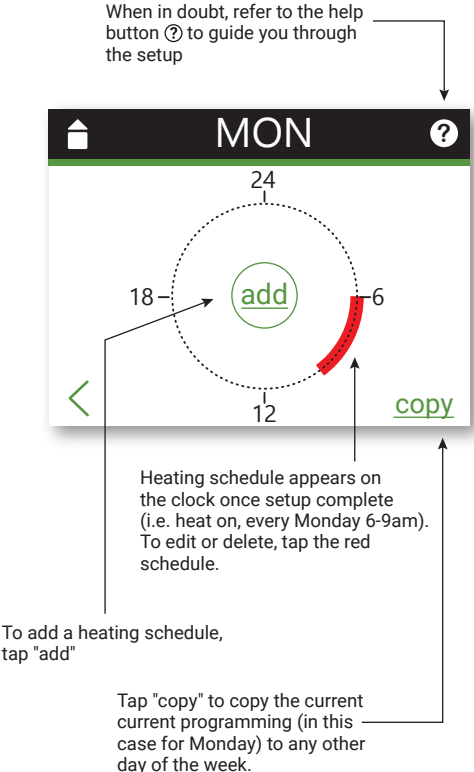
Home screen information



Note: The thermostat cannot be mechanically switched off. However, it will consume minimal electricity in sleep mode.

5

Timer setup

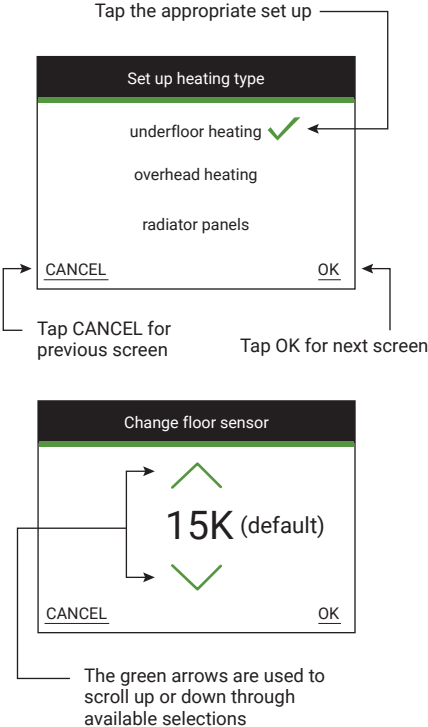


6

User Guide

TS 500 Setup

The installation wizard will give you step by step instructions.



4