

Installation Guide

Connecting Danfoss Composite Pipes to FHF Manifold

1 Connecting Danfoss Composite Pipes to FHF Manifold



Fig. 1: Before connecting the heating circuit to manifold cleanly cut off FH composite pipe in the correct length.



Fig. 2: Centre pipe and bevel with bevelling tool - 2 mm all round bevel on inner pipe.



Fig. 3: Slip compression fitting nut over FH composite pipe and push down fitting insert (Eurocone) until it meets end stops.



Fig. 4: Tighten compression fitting nut with a 30 mm open ended spanner.

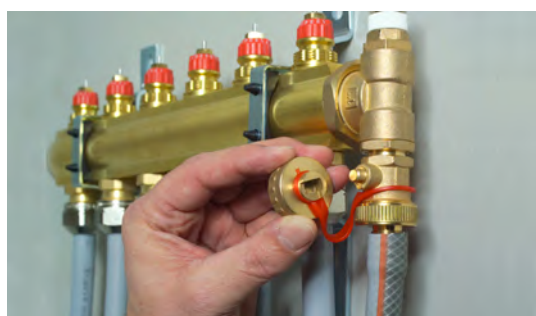


Fig. 5: Shut off main supply and return ball valves. Heating circuits are individually flushed via fill and drain valves mounted on respectively supply and return manifold.



Fig. 6: Label the individual heating circuits. Carry out pressure test in accordance with the pressure test protocol.



Fig. 7: Open ball valves and all flow meters completely.



Fig. 8: Preset manifold valve for each heating circuit according to calculations and manifold data sheet.



Fig. 9: Fix actuator to valve with a 2 mm Allen key and connect actuator and room thermostats via wiring centre or master controller.



Fig. 10: Finally, fit cabinet door.



DeveX Systems specialises in heating, cooling and insulation solutions for new and existing buildings in residential, commercial and industrial environments.

For more information on any of our product lines, please contact us at:

1800 636 091 or info@devexsystems.com.au

www.devexsystems.com.au



Unit 5, 83 Bassett Street Mona Vale \ PO Box 707 Mona Vale NSW 1660
T 1800 636 091 \ F 02 9997 7852
E info@devexsystems.com.au \ W www.devexsystems.com.au
DeveX Systems Pty Ltd \ ACN 122 894 562

